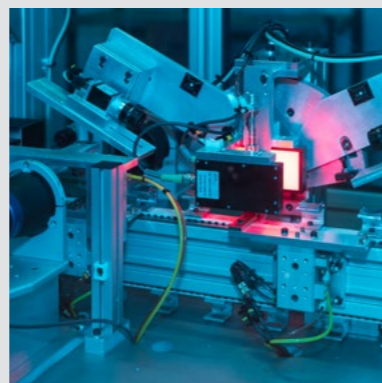


## OUR QUALITY CERTIFICATIONS

Our quality system enables us to secure a high quality commitment and our ISO IATF and EN9100 certificates.



AUTOMATIC INSPECTION WITH CAMERA AND SCANNING DEVICES



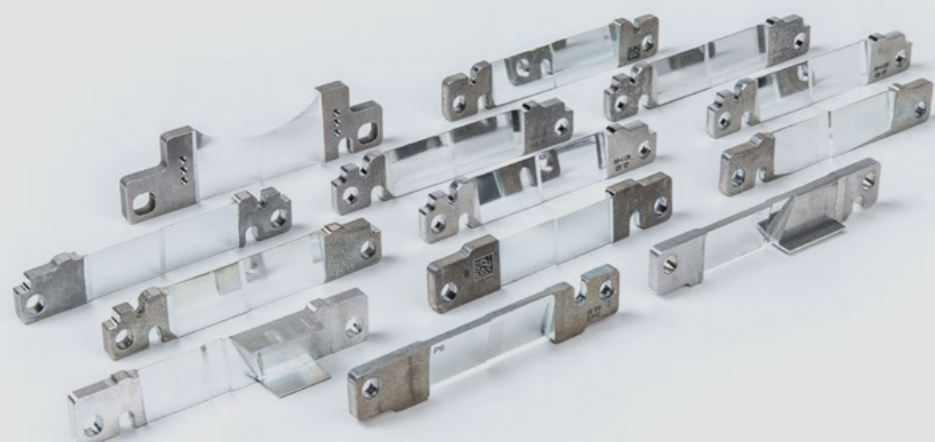
Création : www.peys-studio.com • Crédits photos Daniel Durand • Imprimerie Montclair • Avril 2018



## ENVIRONMENT

Our commitment to the environment is embodied by concrete actions through the "Arve Pure" project:

- **1<sup>st</sup> Axis:** Reduction of the toxic pollutants in production
- **2<sup>nd</sup> Axis:** Detection and follow-up of the toxic pollutants
- **3<sup>rd</sup> Axis:** Regulation of the non-domestic rejections
- **4<sup>th</sup> Axis:** Communication towards the industry and the general public



### ADDRESS

Palumbo Industries  
358, rue de l'Industrie  
F-74130 VOUGY

### PHONE

+33 (0)4 50 986 557

### E-MAIL

[contact@palumbo-industries.com](mailto:contact@palumbo-industries.com)



# PALUMBO Industries

PRECISION MACHINING

# Specialist of profile machining

## Automotive & Aerospace Industry



[WWW.PALUMBO-INDUSTRIES.FR](http://WWW.PALUMBO-INDUSTRIES.FR)

SPECIALIST OF **PRECISION MACHINING** FOR 40 YEARS - INNOVATIVE PRODUCTION PROCESSES FOR HIGH PRECISION MECHANICAL COMPONENTS FOR **AUTOMOTIVE** AND **AEROSPACE**.



AUTOMOTIVE



AEROSPACE

We develop **co-engineering with our customers** and offer technical improvements from the early design phase (*alternative raw material, drawing change, suggestions for great and surface treatments, etc*)

3 PATENTS FOR HIGH QUALITY SURFACE MILLING

## OUR SKILLS



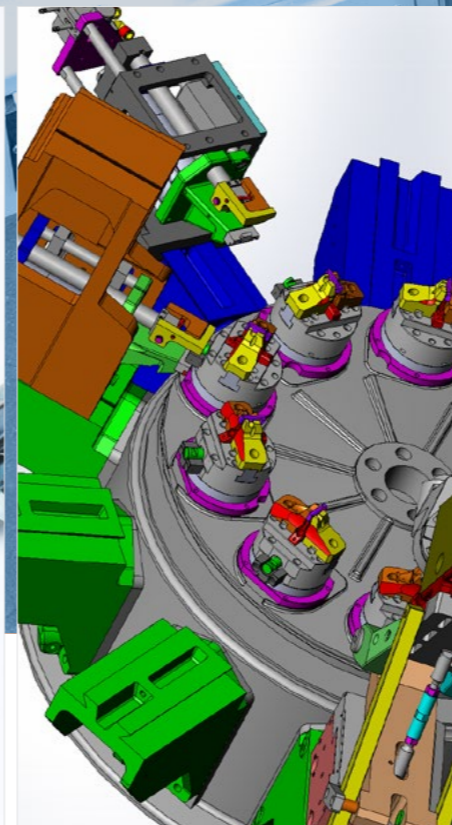
PROFILE MACHINING



CNC PRECISION MACHINING



MACHINING OF CASTED & FORGED BLANKS



DESIGN OF SPECIAL TRANSFER MACHINES



## OUR 4 STRATEGICAL AXES

- Innovation
- Product quality
- Protection of the environment
- Societal governance

## OUR STRIVE FOR INNOVATION



Recognized as an **"Innovative company"** by the French State Bank for Investments (BPI), our main growth factor is our **innovation capacity**.

We are partners of several R&D centers and a member of the cluster "Arve Industries"

